



Appletree House Primrose Lane, Kerdiston, Norfolk, NR10 4TX
£1,550 PCM



Appletree House Primrose Lane, Kerdiston, Norfolk, NR10 4TX

£1,550 PCM

**** UNDER APPLICATION ****

Located in the rural village of Kerdiston, this immaculate detached 4 bedroom farmhouse overlooks fields and enjoys a large garden and spacious living accommodation. Available immediately. Call today to register your interest.

For room measurements please click on the floor plan option.

Available: Early/Mid December 2022

Furnishing: Unfurnished

Council Tax: Band E

Damage Deposit: £1,783.00

Holding Deposit: £356.00

Pets: 1 dog considered

Description

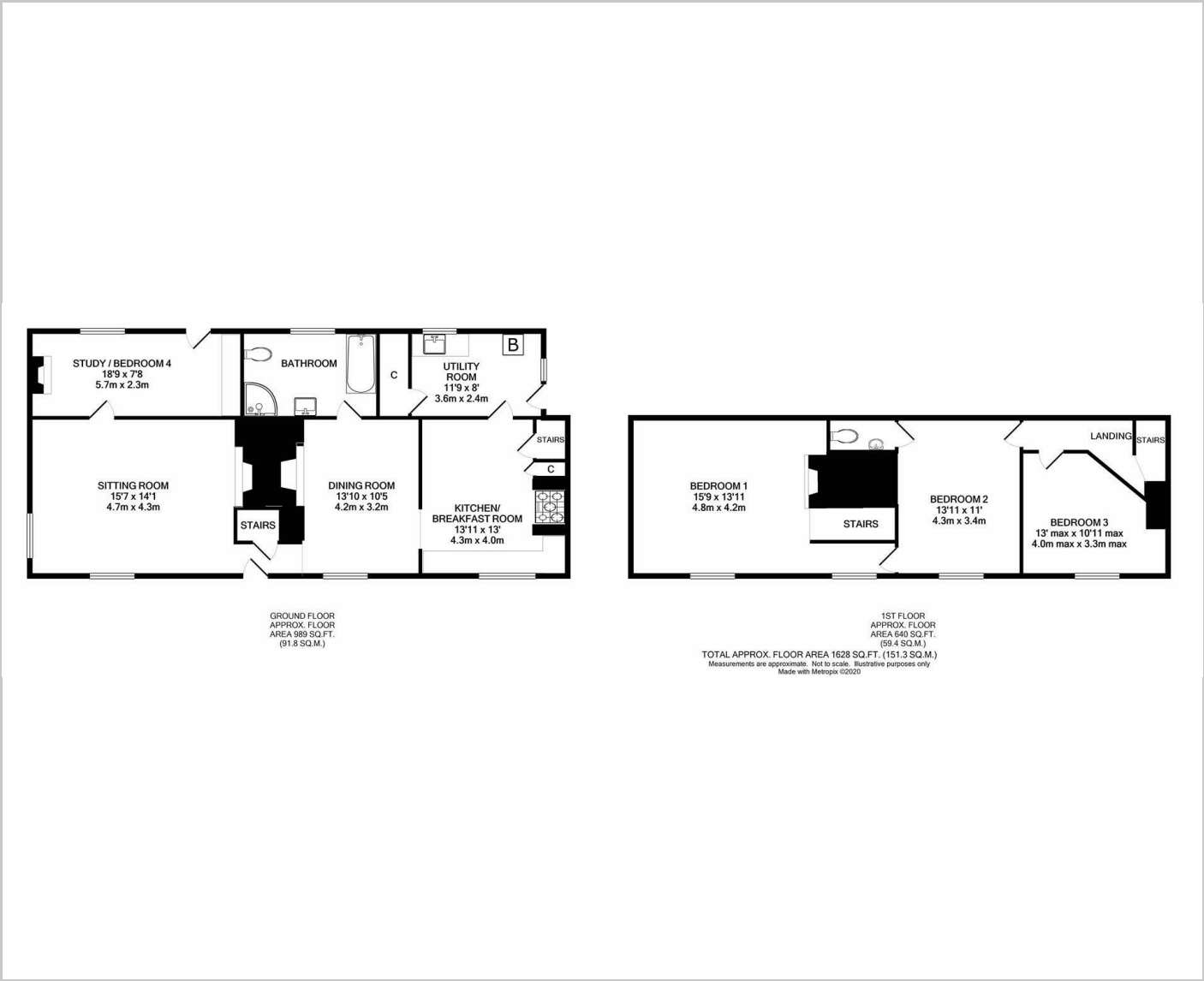


Situation



Unfurnished
Council Tax Band: E
Available: 10th December 2022

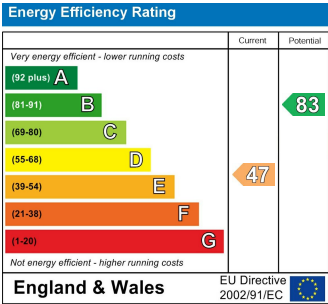
Floor Plans



Area Map



Energy Performance Graph



These particulars, whilst believed to be accurate are set out as a general outline only for guidance and do not constitute any part of an offer or contract. Intending purchasers should not rely on them as statements of representation of fact, but must satisfy themselves by inspection or otherwise as to their accuracy. No person in this firms employment has the authority to make or give any representation or warranty in respect of the property.